

# Influenza Illnesses Summary Report: Joplin City, Jasper, Newton, McDonald, Barton, Dade and Vernon Counties

## An Overview of Two Seasons: 2008/2009 vs. 2007/2008

Joplin City, Jasper, Newton, Barton and Vernon Counties all reported less cases of influenza during the current 2008/2009 season compared to the previous 2007/2008 season.

Of the seven jurisdictions, Joplin City had the most cases reported during both seasons as well as the highest 2-year average (1,424 cases). See county incidence figures below.

Figure 1

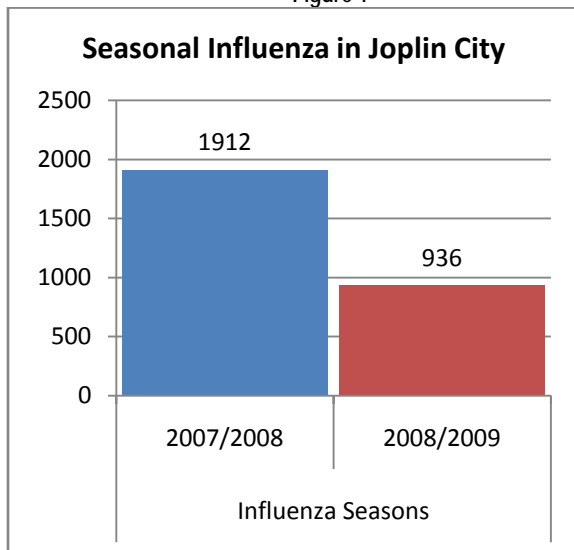
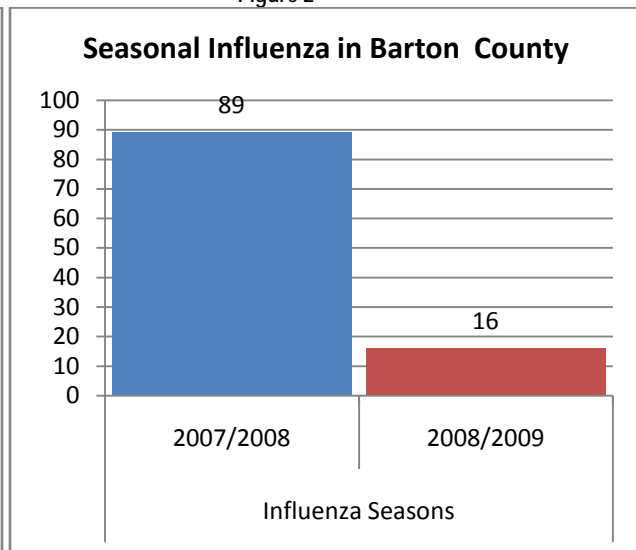


Figure 2



Of the 7 jurisdictions, Newton County was the only one that had no case reported during the current influenza season

Figure 3

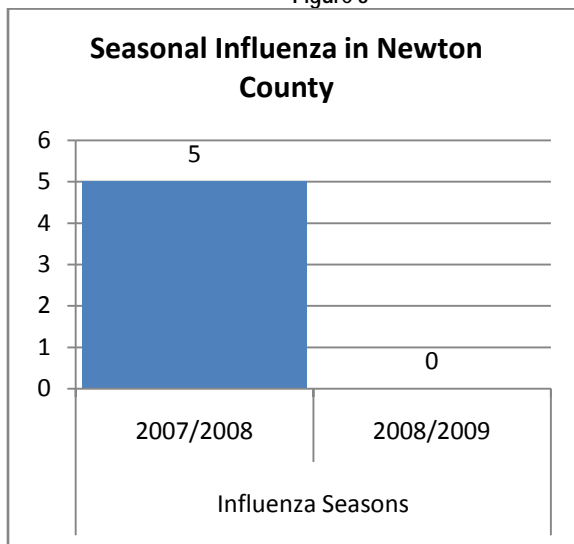
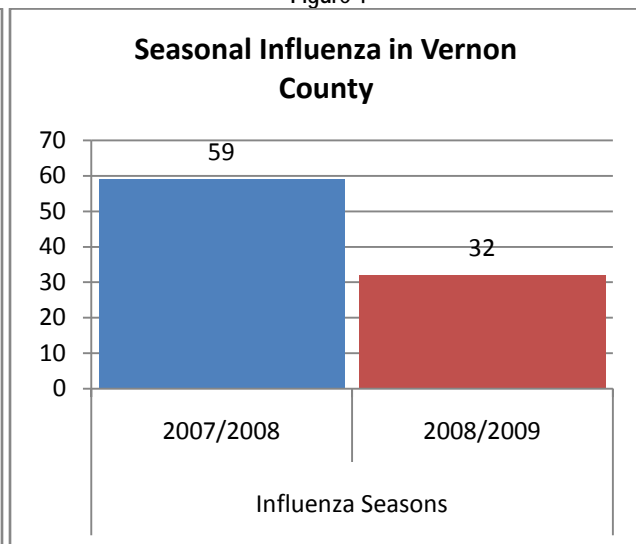
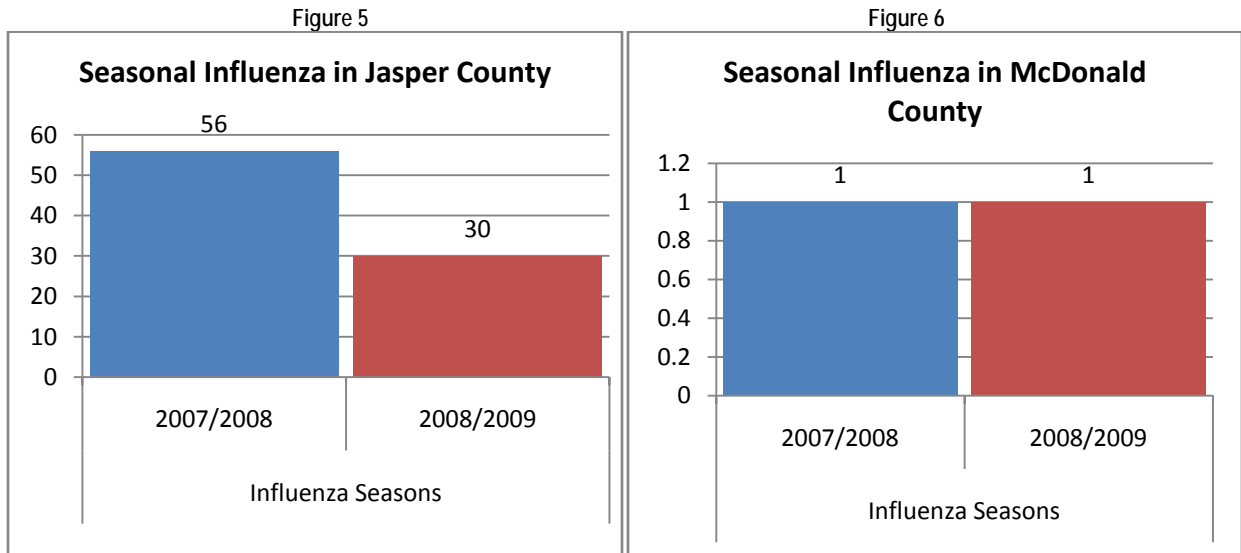


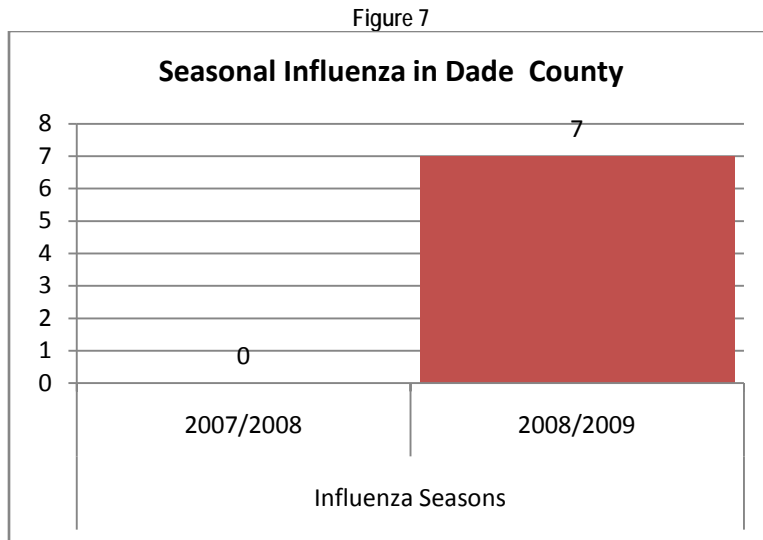
Figure 4



McDonald County reported one (1) case during each of the two seasons. Of the seven jurisdictions covered in this report, McDonald County had the lowest average for the two years (1 case). See figure 6.



Dade County had an increase of 7 cases during the current season and no case reported during the previous season as shown in figure 7.



**Types of Influenza**

In 2007/2008, Influenza Type A was the most reported in Missouri, Joplin City, Jasper, Newton, and Vernon Counties. Barton reported more Type B cases compared to A, while McDonald County reported an Untyped/Unknown Influenza type.

In the current 2008/2009 season, Type A was still the predominantly reported influenza category. Vernon and Barton Counties reported more Type B influenza than Type A. McDonald County reported Untyped/unknown type of influenza.

## Age and Incidence of Influenza

In 2007/2008, Missouri had more cases among 25-49 age group and lowest incidence among 50-64 years. In 2008/2009 season, most cases were reported among 5-14 years age group in Missouri, Joplin, Jasper, Barton and Vernon Counties.

## Missouri

The impact of influenza illnesses in Missouri during the 2008/2009 season was less than the previous season. There were 30,978 cases reported in 2007/2008 season compared to 11,137 cases reported during the current season (2008/2009).

### Clusters/Outbreaks of Influenza-like Illness in Missouri:

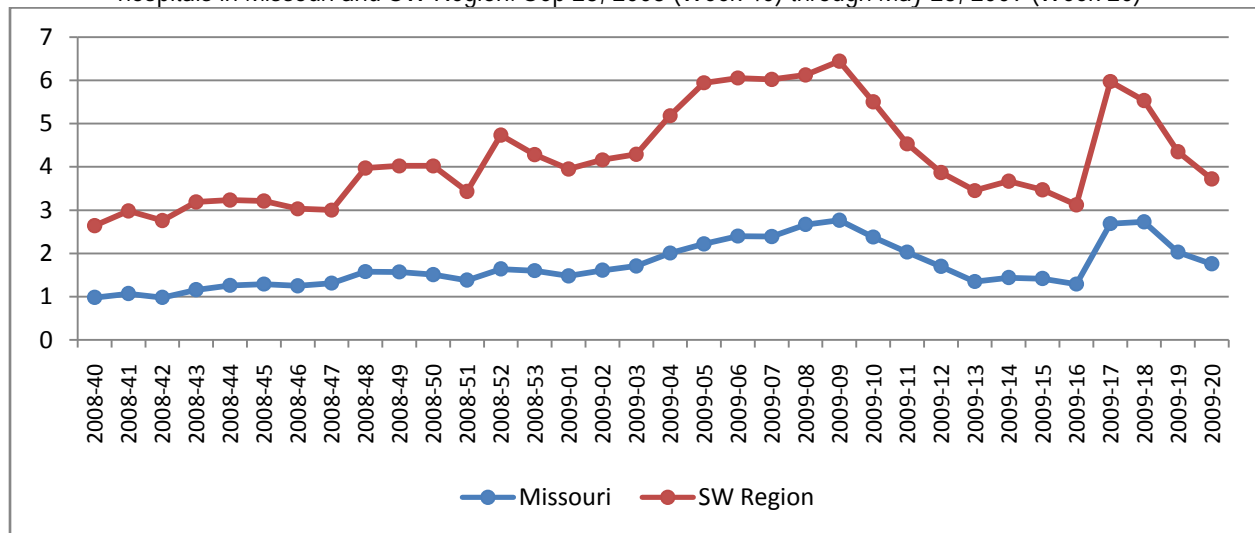
Three school closings were reported in Missouri by week 20 (May 23, 2009) of the 2008/2009 influenza season; 11 school closings were reported through week 20 of last season. No outbreaks were reported through week 20 of the current season, six outbreaks were reported through week 20 of last season.

## Southwest Region

The SW region had fewer cases during the current season (2008/09) compared to 2007/2008 season. There were 4,388 cases during 2007/2008 season while 1,933 cases were reported in the 2008/09 season. According to ESSENCE surveillance on ER visits due to influenza-like illnesses, SW region as a whole had a higher weekly percent during the 2008/2009 influenza season compared to the Missouri rate. Fig. 8

Figure 8

ESSENCE surveillance: Weekly percent of ER visits with chief complaint of Influenza-Like Illnesses from participating hospitals in Missouri and SW Region: Sep 28, 2008 (Week 40) through May 23, 2009 (Week 20)



## References

- Missouri Department of Health and Senior Services, DHSS: <http://www.dhss.mo.gov/>
- Crystal Reports, DHSS
  - ESSENCE Surveillance, DHSS
  - Data and Statistical Reports, DHSS
  - Local Influenza Surveillance Analysis, City of Joplin Health Department